



MESOPOTAMIA

**THE  
CHALDEANS**

---

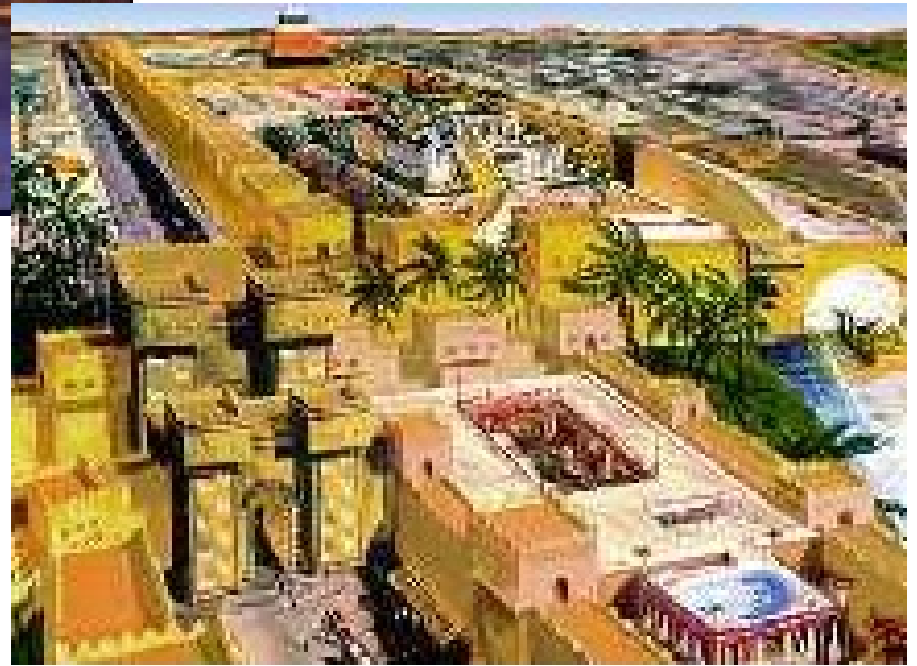
**612-539 BC  
THE NEO-BABYLONIAN  
PERIOD**

Prepared by:  
MBSV  
BSN 4L  
Davao City, Philippines

# The city of Babylon

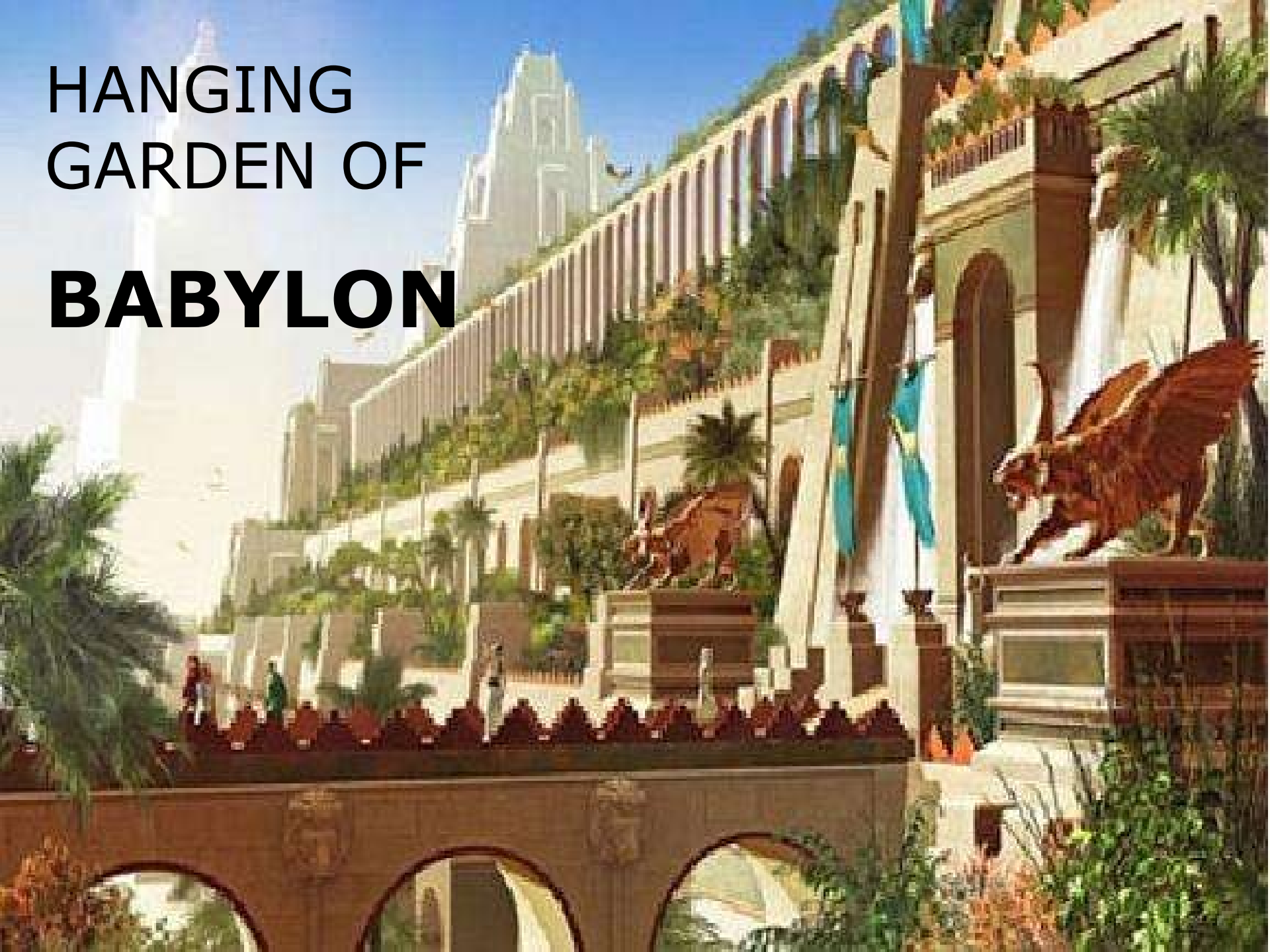
- was rebuilt by Nebuchadnezzar II (605-562)
- 13 ft thick with a circumference of 11 mi



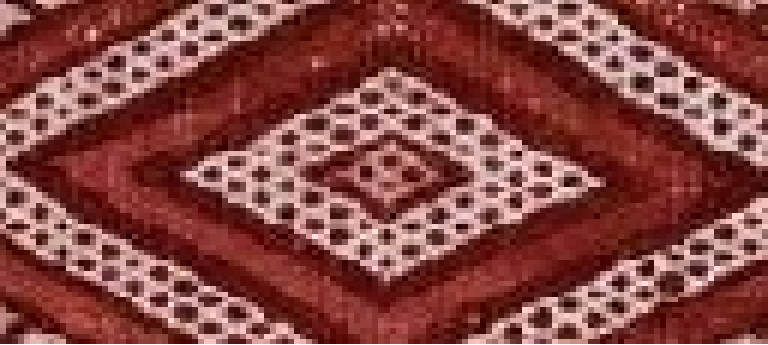


# The Kingdom Of Babylon

# HANGING GARDEN OF **BABYLON**







# Primary goods



- 
- The background of the slide is a black space filled with various celestial bodies. On the left, a large, reddish-brown sphere is partially visible. In the center, there are several smaller spheres in different colors: a reddish one, a yellowish one, a blue one, and a reddish one. On the right, there is a bright white crescent moon, a reddish sphere, a reddish sphere, a reddish sphere, and a blue sphere. The overall scene is a collection of diverse celestial objects.
- **Babylonian** astronomers studied the skies and drew up a **star map**
  - gave **name to** discovered planets; calculated solar and lunar eclipses.

- **Nebuchadnezzar continued Assyrian conquest, invading Judah and seized Jerusalem in 586 B.C.**





---



October 562

- Nebuchadnezzar's death
  - Succession by Amel- Marduk (his son)
-



---

# MESOPOTAMIA GOVERNEMENT

- The leader is “favored” by gods
  - The authority of a state is vested in a KING
  - Property included the CITY, the INHABITANTS, FARMS, ORCHARDS, and outlying TOWNS
-



---

## Duties:

1. Defend the city and his lands from enemy attacks, extend its territory, domination and influence
  2. Build and repair temples
  3. Oversees public works
  4. Promote and preserve law and justice
-

# SOCIAL STRATIFICATION

The 3 classes:

- The aristocrats
- Commoners
- slaves

# Aristocrats



- The rich and powerful families
- Important priests
- Counselors
- Ambassadors
- Generals
- Other high ranking officials

# Commoners



- “backbone of the society”
- Productive workers
- Architects
- Scribes
- Merchants
- Cattle breeders, fishermen, potters, brick makers

# Slaves



- Property of the temple, the palace or the wealthy estates

# RELIGIOUS BELIEFS

- Gods
- Ranked according to their importance, influence and power



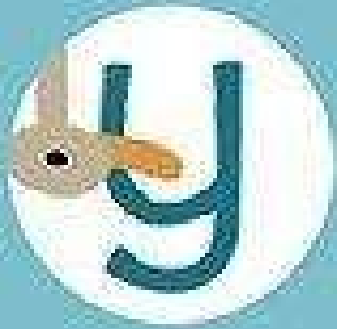


- An- god of Heaven
- Enlil- god of air
- Enki- god of water
- Ninhursag- great  
mother-earth goddess

# CONTRIBUTION OF OTHER CULTURES

---

- Absolute monarchy
- Cosmopolitanism
- Trade and commerce
- Techniques of iron working
- Concept of human life and religious traditions



very much!